

# MONMOUTH UNIVERSITY 2009 ALL SPORTS CAMP



where leaders look forward™



## Circle Sessions Attending:

Session I	June 22 to June 26	\$235
Session II	June 29 to July 2	\$195
Session III	July 6 to July 10	\$235
Session IV	July 13 to July 17	\$235
Session V	July 20 to July 24	\$235
Session VI	July 27 to July 31	\$235
Session VII	Aug. 3 to Aug. 7	\$235
Session VIII	Aug. 10 to Aug. 14	\$235

### FOR OFFICE USE ONLY

Amount: \_\_\_\_\_  
Date: \_\_\_\_\_  
Reply: \_\_\_\_\_  
Amount Due: \_\_\_\_\_

Name: \_\_\_\_\_

Address: \_\_\_\_\_

City: \_\_\_\_\_

State: \_\_\_\_\_

Zip: \_\_\_\_\_

Email: \_\_\_\_\_

Home Phone: \_\_\_\_\_

Emergency Phone: \_\_\_\_\_

Name of Your School: \_\_\_\_\_

Age: \_\_\_\_\_

Circle T-Shirt Size (Adult):

S      M      L      XL

Please Send Additional Brochures To My Friends

Name: \_\_\_\_\_

Address: \_\_\_\_\_

City: \_\_\_\_\_

State: \_\_\_\_\_

Zip: \_\_\_\_\_

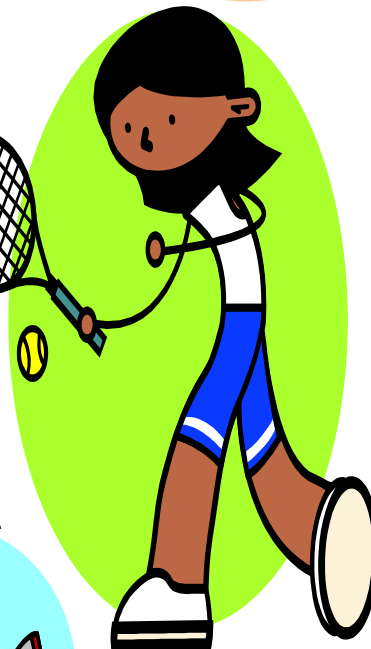
Email: \_\_\_\_\_

I hereby authorize the directors and employees of Monmouth University's All Sports Camp to act for me according to their best judgement in any emergency requiring medical attention. I hereby waive and release all camp employees from any and all liability from injuries and illness while at camp.

Parent's or Guardian's Signature

www.GoMUHawks.com

PLEASE TEAR HERE



www.GoMUHawks.com



# 2009 ALL SPORTS CAMP

June 22 to June 26      July 20 to July 24

June 29 to July 2      July 27 to July 31

July 6 to July 10      Aug 3 to Aug 7

July 13 to July 17      Aug 10 to Aug 14

9:00 a.m. - 4:00 p.m.  
For boys and girls ages 5-13

## PURPOSE

- ^ Sports for your child's growth and enjoyment. This is a recreational, non-competitive sports camp.
- ^ Activity changes every hour during the day. We have three different daily schedules that run during each week. Activities may include, but are not limited to swimming, soccer, t-ball, softball, tennis, self-defense, track & field, field hockey, lacrosse, golf and volleyball.
- ^ Activities vary depending upon facilities, equipment and weather.

## MEDICAL FORMS

A form will be sent upon receipt of your application. It **MUST** be completed by a parent or guardian and returned before the start of camp. Brochures may also be downloaded at the Monmouth University athletics web site:

[www.GoMUHawks.com](http://www.GoMUHawks.com)

## THINGS TO BRING

- ^ Play clothes that allow for free movement. Dresses and skirts discouraged.
- ^ Athletic footwear (no sandals)
- ^ Water bottle - There will be water on the fields to refill bottles.
- ^ Swimwear, towel and bag or backpack for storage
- ^ Sunscreen
- ^ Clothing for inclement weather, if necessary.

## MEALS

- ^ Lunch will be provided daily in an air-conditioned campus facility.
- ^ A snack will be available in the playground at the end of the day.

## CAMP STAFF

The camp staff is comprised of men and women qualified and dedicated to youth participation in a variety of sports. Camp instructors include athletes and coaches from Monmouth University and certified school teachers.

## CAMP HOURS

- ^ Camp will run daily from 9:00 a.m. to 4:00 p.m.
- ^ You may drop off your child anytime after 8:45 a.m.
- ^ Afternoon pick-up is from 3:45-4:00 p.m.
- ^ Late Pick-Up Policy applies after 4:00 p.m.

## EIGHT GREAT SESSIONS

June 22 to June 26	\$235.00
June 29 to July 2	\$195.00
July 6 to July 10	\$235.00
July 13 to July 17	\$235.00
July 20 to July 24	\$235.00
July 27 to July 31	\$235.00
August 3 to August 7	\$235.00
August 10 to August 14	\$235.00

## DEPOSIT

A deposit of \$75 per week is required to secure a place in camp. Balance for camps is due two weeks prior to the start date to each camp. **Deposits are non-refundable.**

**PLEASE MAKE CHECKS PAYABLE TO:**  
Monmouth University

**SEND DEPOSIT & APPLICATION TO:**  
MONMOUTH UNIVERSITY  
All Sports Camp  
400 Cedar Avenue  
West Long Branch, NJ 07764

## REFUNDS

\*Camp refunds (minus deposit) must be requested in writing with a doctor's note.

## SIBLING DISCOUNT

After the first child, each additional sibling attending the same week will receive a 10 percent discount.

## DIRECTIONS

From the Garden State Parkway - Exit 105. Take Route 36 to Route 71. Turn right onto Route 71, continuing as Route 71 forks into Cedar Avenue (stay left). Take Cedar Avenue and turn right at the next light, which is Larchwood Avenue. Entrance to the University is on your left. The Athletic Department will be the first building on your right.

## ADDITIONAL INFO

Contact the MU Athletics Department at (732) 263-5188 for more information.

